

ELECTROVÁLVULAS

Solenoid valves
Électro-distributeurs
Elettrovalvole

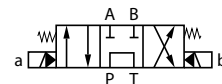


Electroválvula direccional NG16 corredera nº1

NG16 Solenoid valve - spool no.1

Électro NG16 - tiroir nº1

Elettrovalvola direzionale NG16 - cursore nº1



Referencia Part nº	TAMAÑO SIZE	VOLTAJE (V) VOLTAGE (V)	CAUDAL MÁX. (l/min) MAX. FLOW (l/min)	PRESIÓN MÁX. (bar) MAX. PRESSURE (bar)	€
KVNG16-1-12CC H	NG-16	12 VDC	300	350	458,28
KVNG16-1-24CC H	NG-16	24 VDC	300	350	458,28
KVNG16-1-110CA H	NG-16	110 VAC	300	350	458,28
KVNG16-1-220CA H	NG-16	220 VAC	300	350	460,89

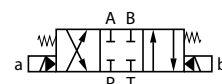


Electroválvula direccional NG16 corredera nº2

NG16 Solenoid valve - spool no.2

Électro NG16 - tiroir nº2

Elettrovalvola direzionale NG16 - cursore nº2



Referencia Part nº	TAMAÑO SIZE	VOLTAJE (V) VOLTAGE (V)	CAUDAL MÁX. (l/min) MAX. FLOW (l/min)	PRESIÓN MÁX. (bar) MAX. PRESSURE (bar)	€
KVNG16-2-12CC H	NG-16	12 VDC	300	350	445,44
KVNG16-2-24CC H	NG-16	24 VDC	300	350	445,44
KVNG16-2-110CA H	NG-16	110 VAC	300	350	445,44
KVNG16-2-220CA H	NG-16	220 VAC	300	350	445,44



Electroválvula direccional NG16 corredera nº3

NG16 Solenoid valve - spool no.3

Électro NG16 - tiroir nº3

Elettrovalvola direzionale NG16 - cursore nº3



Referencia Part nº	TAMAÑO SIZE	VOLTAJE (V) VOLTAGE (V)	CAUDAL MÁX. (l/min) MAX. FLOW (l/min)	PRESIÓN MÁX. (bar) MAX. PRESSURE (bar)	€
KVNG16-3-12CC H	NG-16	12 VDC	300	350	445,44
KVNG16-3-24CC H	NG-16	24 VDC	300	350	445,44
KVNG16-3-110CA H	NG-16	110 VAC	300	350	445,44
KVNG16-3-220CA H	NG-16	220 VAC	300	350	445,44

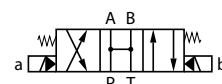


Electroválvula direccional NG16 corredera nº4

NG16 Solenoid valve - spool no.4

Électro NG16 - tiroir nº4

Elettrovalvola direzionale NG16 - cursore nº4



Referencia Part nº	TAMAÑO SIZE	VOLTAJE (V) VOLTAGE (V)	CAUDAL MÁX. (l/min) MAX. FLOW (l/min)	PRESIÓN MÁX. (bar) MAX. PRESSURE (bar)	€
KVNG16-4-12CC H	NG-16	12 VDC	300	350	458,28
KVNG16-4-24CC H	NG-16	24 VDC	300	350	470,19
KVNG16-4-110CA H	NG-16	110 VAC	300	350	458,28
KVNG16-4-220CA H	NG-16	220 VAC	300	350	458,28

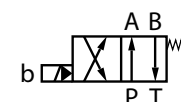


Electroválvula direccional NG16 corredera nº22

NG16 Solenoid valve - spool no.22

Électro NG16 - tiroir nº22

Elettrovalvola direzionale NG16 - cursore nº22



Referencia Part nº	TAMAÑO SIZE	VOLTAJE (V) VOLTAGE (V)	CAUDAL MÁX. (l/min) MAX. FLOW (l/min)	PRESIÓN MÁX. (bar) MAX. PRESSURE (bar)	€
KVNG16-22-12CC H	NG-16	12 VDC	300	350	405,60
KVNG16-22-24CC H	NG-16	24 VDC	300	350	405,60
KVNG16-22-110CA H	NG-16	110 VAC	300	350	405,60
KVNG16-22-220CA H	NG-16	220 VAC	300	350	405,60

ELECTROVÁLVULAS

Solenoid valves
Électro-distributeurs
Elettrovalvole

Cartucho de precarga de presión para válvula NG16 Trale



Preload pressure cartridge for Trale NG16 valve
Cartouche precharge de pression pour valve NG16 Trale
Cartuccia di precarica di pressione per valvola NG16 Trale

Referencia Part n°	TAMAÑO SIZE	€
CARTPILNG16	NG-16	30,93

Placa base NG16



Subplate for NG16
Embase pour NG16
Piastra base NG16

Referencia Part n°	ROSCA THREAD	TAMAÑO SIZE	CAUDAL (L/MIN) FLOW (L/MIN)	€
PFNG1634 H	3/4" BSP	NG-16	300	202,33
PFNG1634L H	3/4" BSP	NG-16	300	205,54
PFNG16100 H	1" BSP	NG-16	300	211,96
PFNG16100L H	1" BSP	NG-16	300	234,45

Conectores con led DIN 43650



Connectors with DIN 43650 led
Connecteurs avec led DIN 43650
Connettori con Led DIN 43650

Referencia Part n°	PATILLAS PINS	VOLTAJE (V) VOLTAGE (V)	€
CONLED12CC H	3	12 VDC	2,89
CONLED24CC H	3	24 VDC	2,89
CONLED220CA H	3	220 VAC	2,89
CONLED110CA H	3	110 VAC	2,89
CONLEDCC4P	4	12 / 24 VDC	3,21

Hasta fin de existencias / Until end of stock / Jusqu'à la fin du stock / Fino ad esaurimento